

Illustrative photo

Producer: **ECO Modine**Line: **GCE**Model: **GCE 352 A8**Defrost system: **Electric**Heat exchanger coating type: **Aluminium fin**Cooling capacity [kW]: **7.94**Air flow [m³/h]: **5,000**Fin spacing [mm]: **8.0**Air throw [m]: **15**Fans [n° x ømm]: **2 x 350**

Data

Evaporator technical data

Air flow	[m ³ /h]	5,000
Air throw	[m]	15
Surface internal	[m ²]	3.58
Surface external	[m ²]	25.00
Inner volume	[dm ³]	5.3
Fin spacing	[mm]	8.0
Net weight	[kg]	46

Fans technical data

Fan quantity		2
Fan diameter	[mm]	350
Fan speed	[RPM]	1,450
Fans power	[W]	370
Fan current	[A]	1.92
Fan power supply		230V/1Ph/50Hz
Fan motor type		AC

Acoustic data

Acoustic pressure (10m)	[dB(A)]	48.0
Acoustic power	[dB(A)]	79.0

Connections

Coil connection (inlet)	[mm]	16
Coil connection (outlet)	[mm]	28
Drain connection diameter	[inch]	1

Defrost

Electric defrost power	[W]	4,050
------------------------	-----	-------

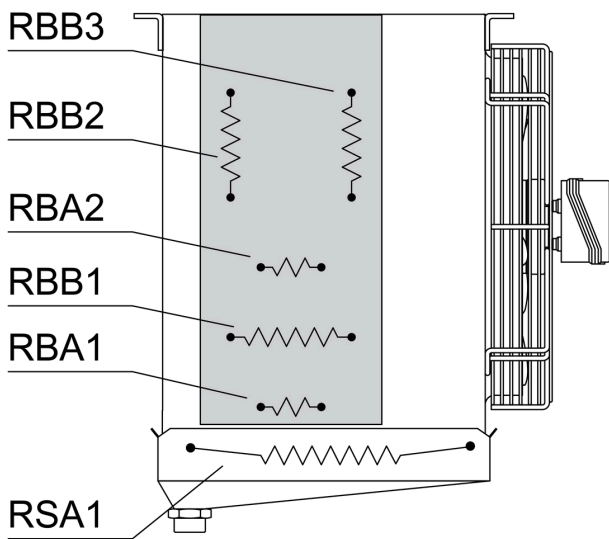
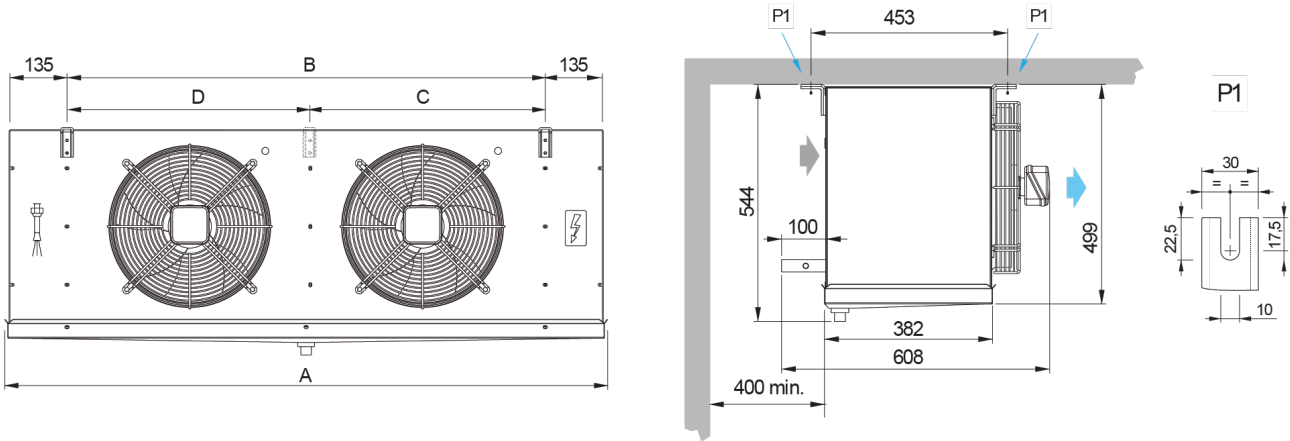
Performance

Nominal conditions: refrigerant: R404A , evaporation (dew point): -8 °C, inlet air temperature: 0 °C, humidity: 85 %

Cooling capacity [kW]

		Air inlet temperature [°C]											
		-35	-30	-25	-20	-15	-10	-5	0	2	5	10	12
Temperature difference [K]	4	3.45	3.45	3.49	3.59	3.68	3.78	3.87	3.97	4.25	4.66	4.66	4.66
	5	4.32	4.32	4.36	4.48	4.60	4.72	4.84	4.96	5.31	5.83	5.83	5.83
	6	5.18	5.18	5.24	5.38	5.52	5.67	5.81	5.96	6.37	6.99	6.99	6.99
	7	6.04	6.04	6.11	6.28	6.44	6.61	6.78	6.95	7.43	8.16	8.16	8.16
	8	6.91	6.91	6.98	7.17	7.37	7.56	7.75	7.94	8.49	9.32	9.32	9.32
	9	7.77	7.77	7.85	8.07	8.29	8.50	8.72	8.93	9.56	10.50	10.50	10.50
	10	8.63	8.63	8.73	8.97	9.21	9.45	9.69	9.93	10.60	11.65	11.65	11.65

Dimensions



Length	[mm]	1,425
Width	[mm]	508
Height	[mm]	499
Dimension A	[mm]	1425
Dimension B	[mm]	1130